

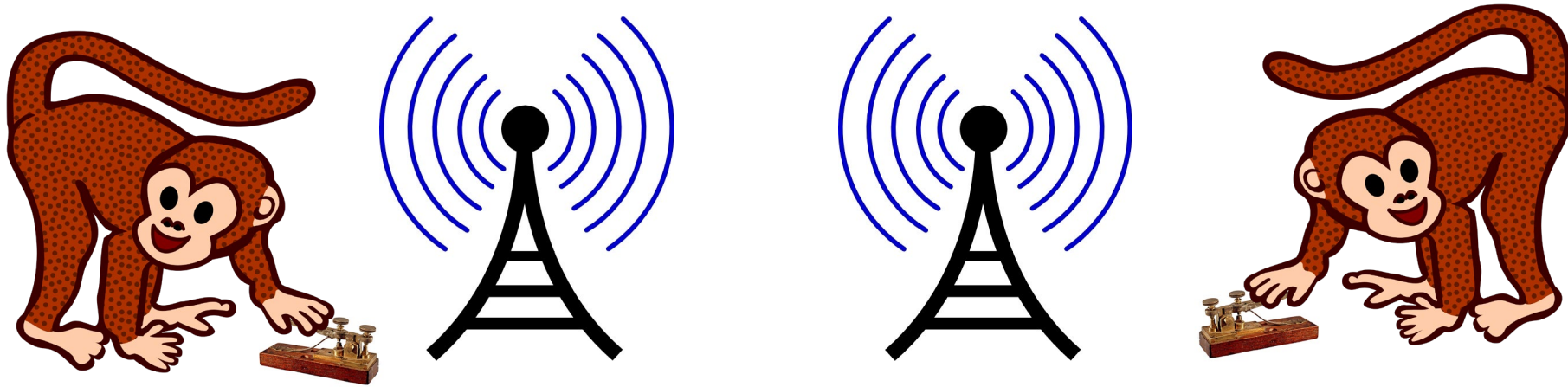
# Connectivity, identity and trust (MCP)

**Thomas Christensen**  
**Secretary General**  
**Maritime Connectivity Platform Consortium**



e-navigation - it's all about exchange of information

In a modern fashion - using contemporary technology



**e-navigation - it's all about exchange of information**

**In a modern fashion - using contemporary technology**

**Which means using services - Service Oriented Architecture**

**What's a service**

**Maritime services**

**(associated) Technical Services**



**e-navigation - it's all about exchange of information**

**In a modern fashion - using contemporary technology**

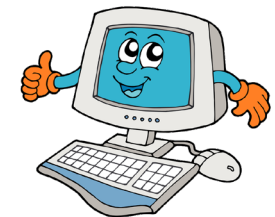
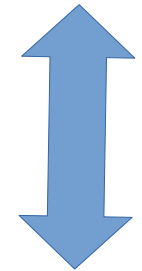
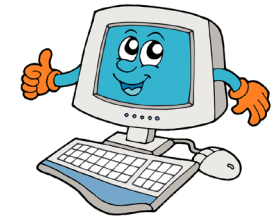
**Which means using services - Service Oriented Architecture**

**What's a service**

**Maritime services**

**(associated) Technical Services**

**Mostly computer to computer**



**We have a guideline for technical services:**

**G1128 The specification of e-navigation technical services**

**And**

**When using internet technology - webservices**

**We have a complementary guideline**

**G1157 Web service based S-100 data exchange**



**We have a guideline for technical services:**

**G1128 The specification of e-navigation technical services**

**And**

**When using internet technology - webservice**

**We have a complementary guideline**

**G1157 Web service based S-100 data exchange**



**Not only for IALA!**

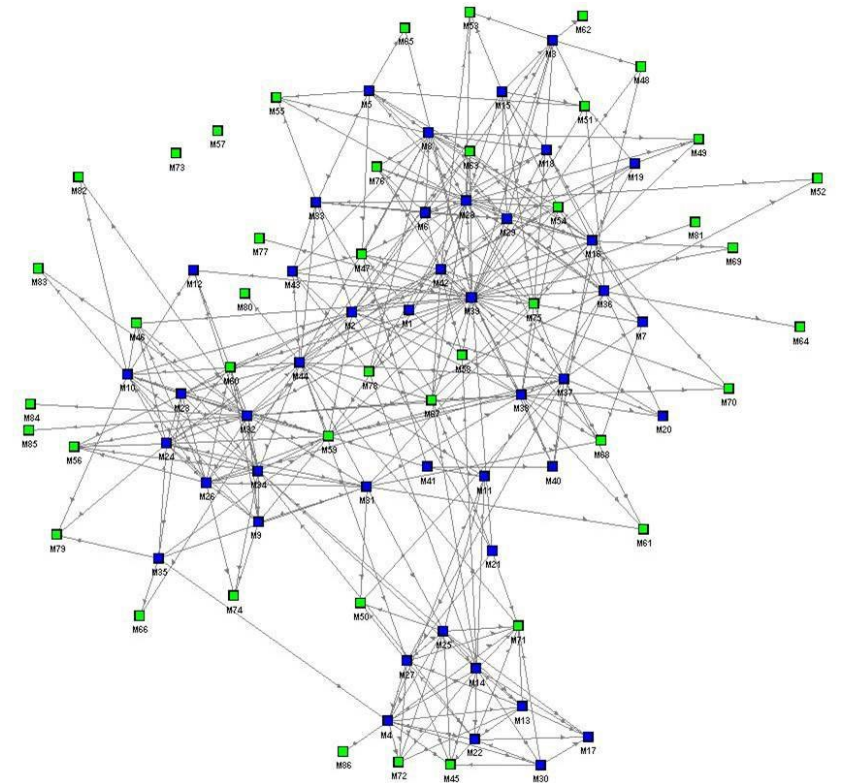
What else do we need?



Most information exchange will be computer to computer

A computer needs a reliable organised service registry in order to locate the needed services

So part of MCP is a service registry for technical e-navigation services

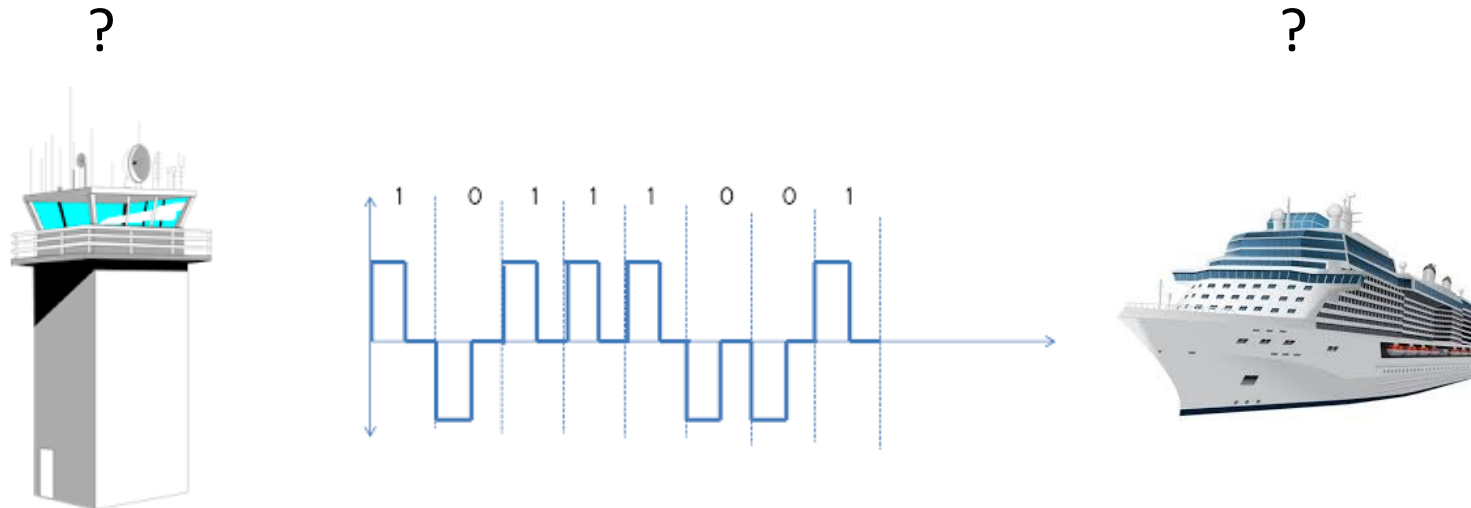




## Next challenge

### Who is who?

It is necessary to proof identity of service providers and sometimes service consumers



The MCP has you covered - with the identity registry

Providing trustworthy means of proofing the identity of both users and machines that exchanges information

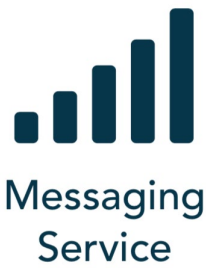


# Core components of the MCP

Trusted and verifiable identities

Service discoverability

Secure and reliable information exchange



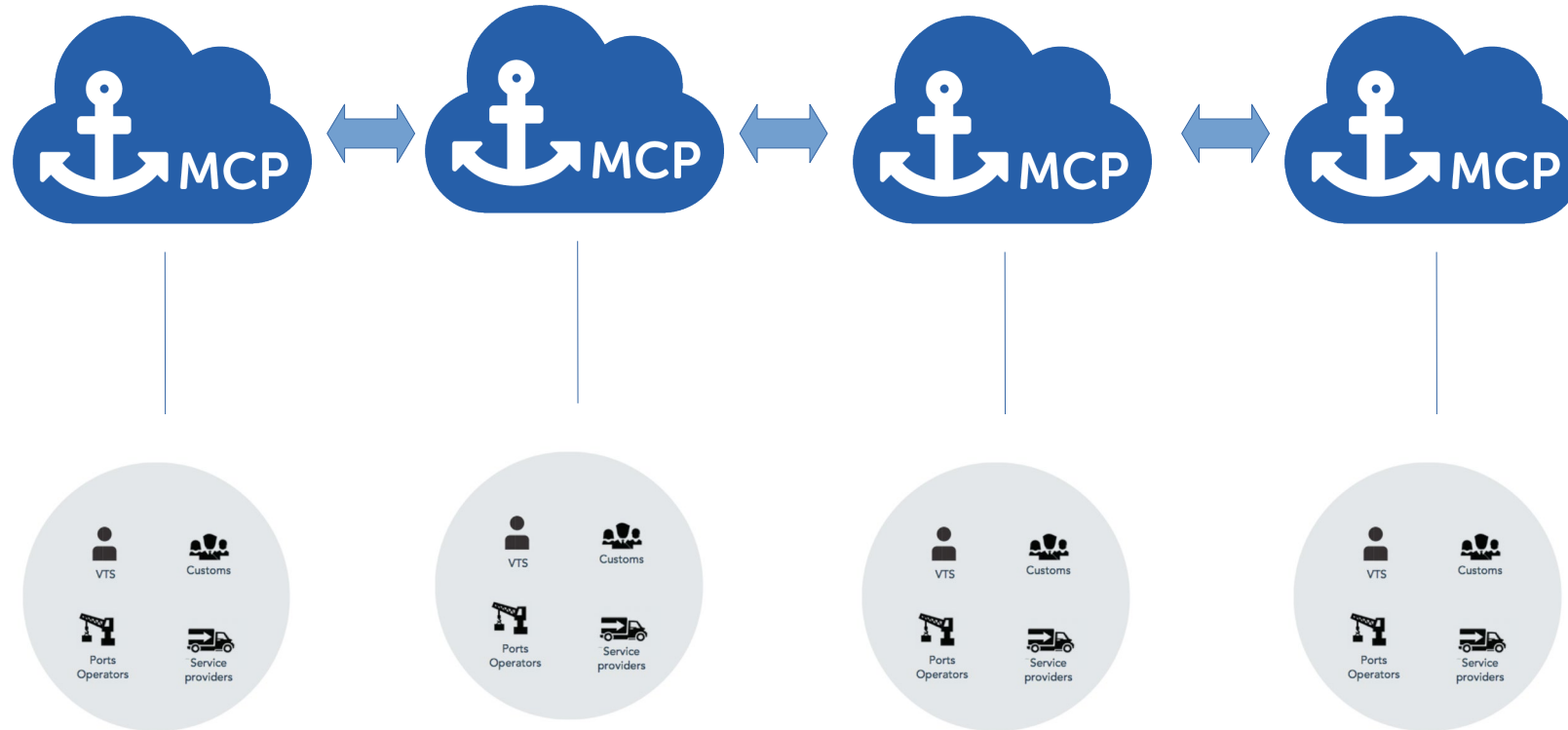
**So - we all need to use THE MCP**

**Where is it and who is running it?**

**And do we really want to do that?**



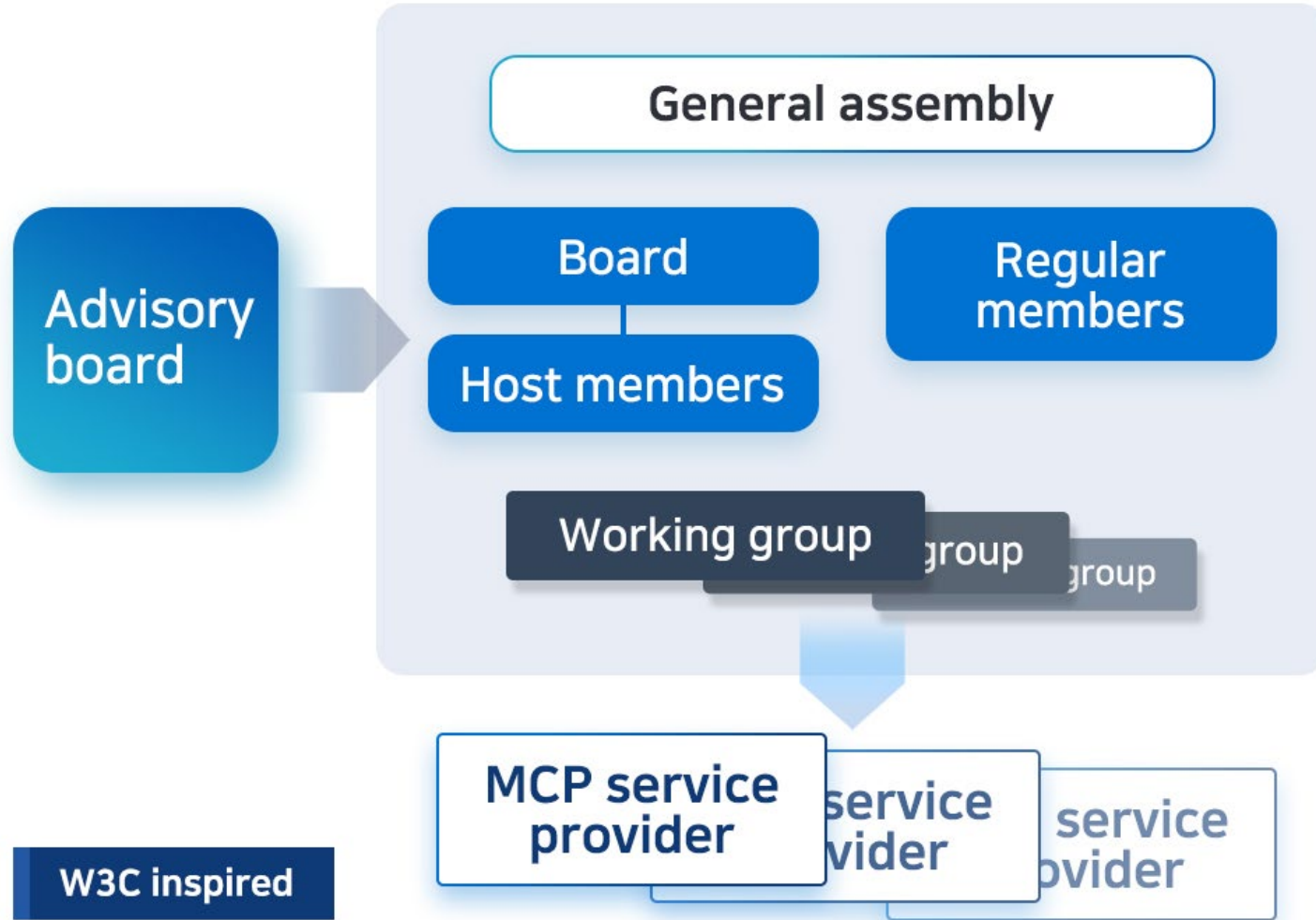
# Multiple MCP instance providers



**Which needs to be harmonised!**



# Maritime Connectivity platform Consortium



**MCP status**

**Testbed running since 2015**

**Consortium established 2019 - 25 members**

**Operational instances (identity registry) in Korea and Sweden (Navelink), soon Finland**

**Several other testbeds**





Thank you for you attention

